

VIND MAREP REPORT JAN 28,2007

Over the past few months activity was normal until the wind storms in Dec. Some Aids to Navigation and other mooring aids were displaced or damaged due to the high winds, also reports of vessels taking on water or sinking were reported. (Thetis Isl and Deep Bay) Some of the instances was due to the boat owners own ignorance and not checking their vessel. The destruction of the Nanaimo Yacht club boat houses due to fire is another reminder that we all should be checking our vessels on a regular basis during the winter months ensuring all is well.

This months NOTMAR has a Questionnaire for anyone wishing to participate. They have run into problems with budget cut backs and are looking for ways to alleviate but not comprimize the updating of charts .

The Canadian Hydrographic Service is studying the possibility of providing more Section 2 Notices to Mariners for paper charts in the graphic form, and is requesting your input. We have identified three possible methods that we would like you to consider when you complete the questionnaire. The questionnaire can be found by clicking on the following web address, or pasting it into your

browser: . Complex changes to charts must be provided as image patches ([see method 1 below](#)). However, smaller changes could be provided only as images ([see method 2 below](#)), or as text with supporting images ([see method 3 below](#)). Please choose one option:

Techniques for applying changes to charts

Method 1: Patch

- complex changes

Advantages

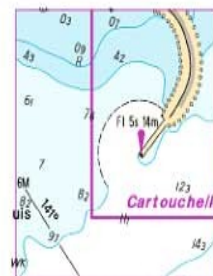
- Several changes on one graphic

Disadvantages

- probability of pasting them out of position

- changes are not always apparent

- May need access to the internet



© Ministre des Pêches et des Océans Canada 2004

© Minister of Fisheries and Oceans Canada 2004

Pour plus d'information, vous adresser à : shcinfo@dfo-mpo.gc.ca

For further information please contact: chsinfo@dfo-mpo.gc.ca

Method 2: NTM TILE

- simpler changes

Advantages

- corner coordinates
- changes in grey wash, to allow the user to choose between cut and paste or apply by hand
- combines several changes into one graphic



Disadvantages

- May need Internet access

Method 3:

Text with graphic

- simpler changes

Advantages

- already familiar for those using Admiralty notices

Disadvantages

- time consuming

2345 - Dow's Lake - New Edition - 25-MAY-2001 - NAD 1983

09-DEC-2005

Add	dangerous underwater rock symbol	45°23'38.5"N 075°41'55.0"W
Delete	light FLR and radar reflector	45°23'37.5"N 075°42'09.5"W
Add	red starboard hand lighted pillar buoy FLR marked B69	45°23'37.5"N 075°41'56.5"W
Add	depth of 3 metres 6 decimetres	45°23'36.5"N 075°42'06.5"W
Add	submarine cable	joining 47°23'32.5"N 075°42'08.5"W 45°23'33.5"N 075°42'04.0"W 45°23'33.5"N 075°41'59.5"W and 45°23'32.00"N 075°41'56.5"W

Also , I would like to thank those squadrons(Cape Lazo- Bill Miller; Ripple Rock-Pat James) who responded to our request (Nov 26) concerning Marep training cruise. It is a great opportunity . I will be contacting you with more details shortly.

Nancy De Gagne